

De afmetingen van de lont en vooral de positie ervan t.o.v. het cilinder gat zijn kritisch ! Maak deze situatie "precies" zoals op deze tekening staat. Gebruik bij voorkeur gedestilleerde alcohol 96/98% (heter en minder vervuילend). Even voorwarmen met zuiger en schuif in achterste posities om geconsenseerd water van de vlam tegen en in de cilinder te laten verdampen.

The dimensions of the wick and especially its position in front of the cylinder hole are critical ! Make the situation "exactly" as on this drawing plan. Preferably use denaturated alcohol 96/98% (hotter and less polluting). Pre-heat some half minute with piston and valve in ultimate back positions to evaporate water condense against and in the cylinder

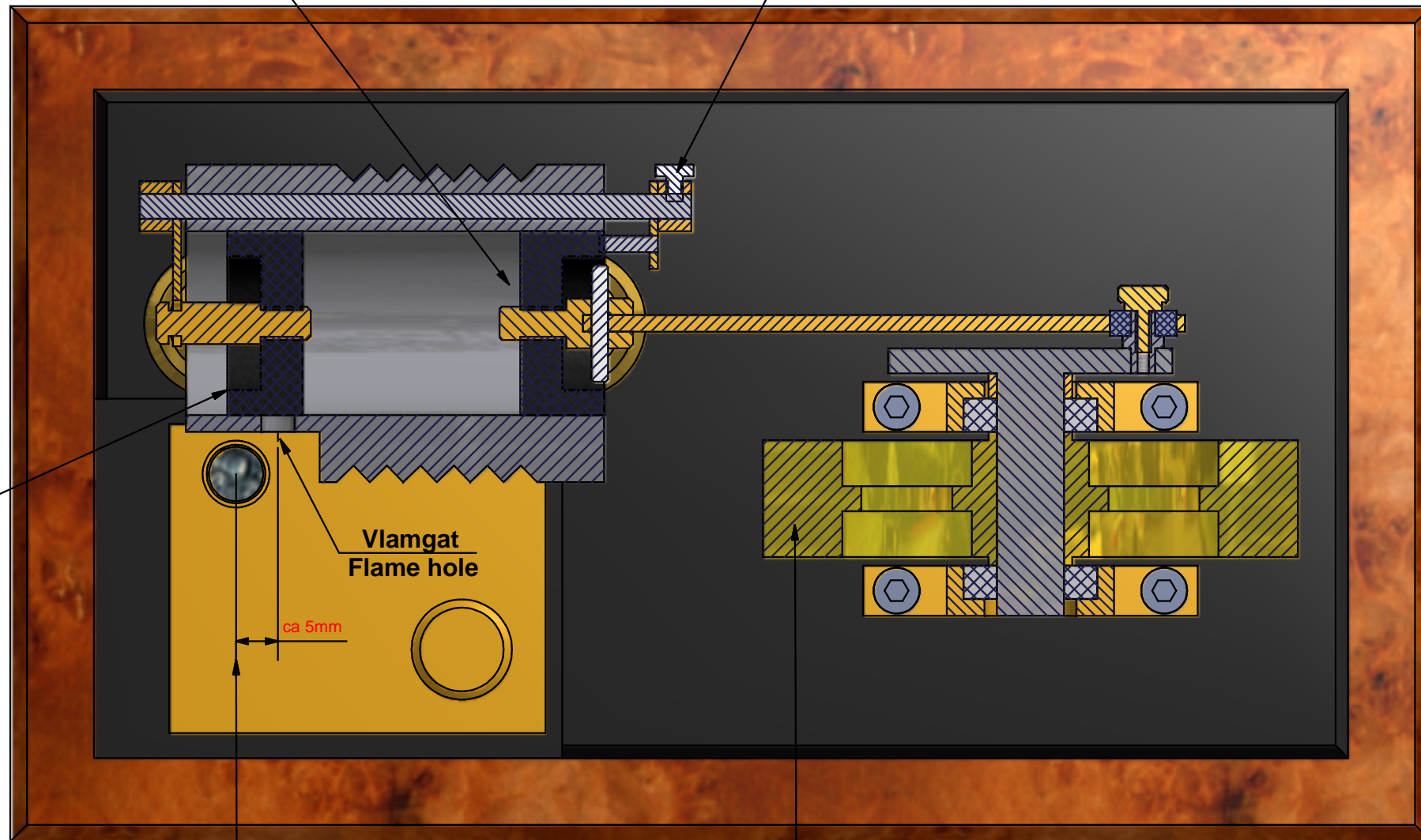
Nooit iets smeren!
Never oil anything!

zie betreffende pagina op <http://ridders.nu> voor probleemanalyse & oplossingen
see concerning page on <http://ridders.nu> for trouble shoot list

<div>J</div> <div>R</div>	Vlamhapper met inwendige schuif Flame-eater with internal valve		
	Ontw./Design J. Ridders	Units: mm	Org. date: Dec-14-2005
	Get./Drawn J. Ridders	Format: A4	Update: Mar-17-2011
		Scale: no scale	Blad/Sheet: 1 van/from 6
Beschrijving / Description in: http://ridders.nu			

Zuiger / Piston

Instelbare aanslag / Adjuster

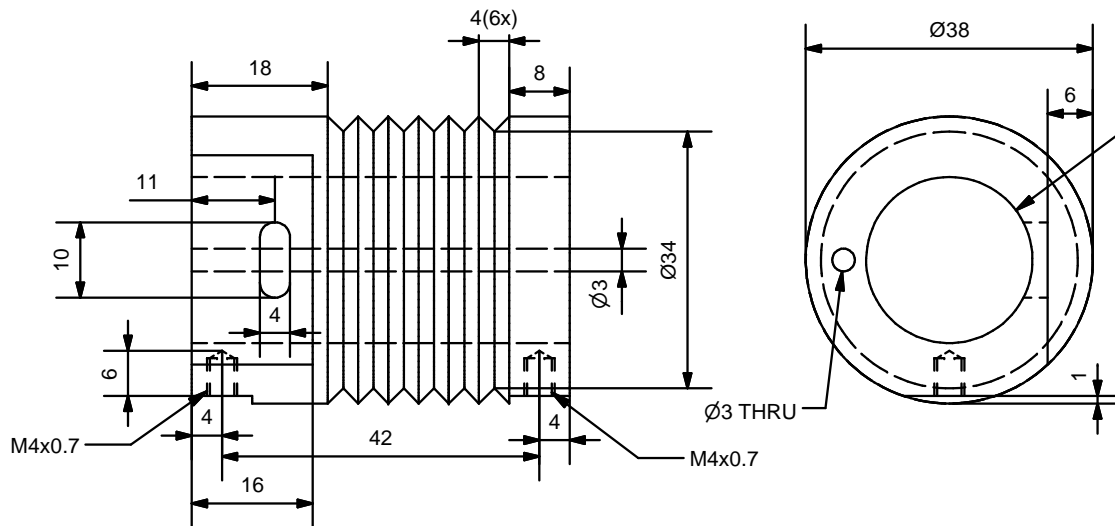


Typische lont positie !
Typical wick position !

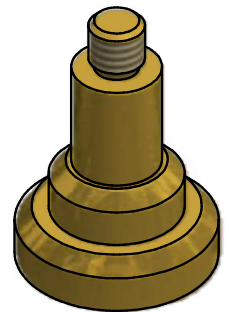
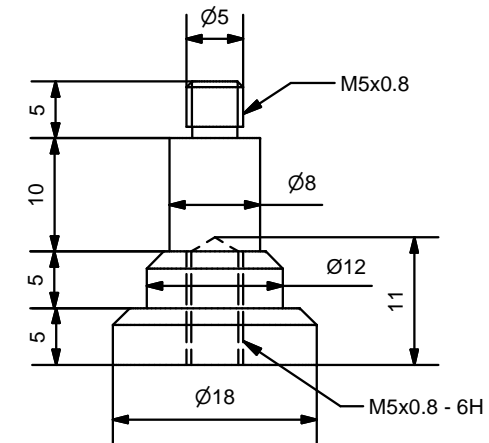
Inwendige schuif / Internal valve

Vliegwiel
Fly wheel

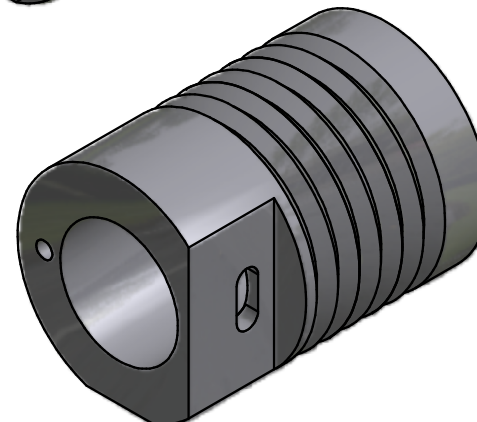
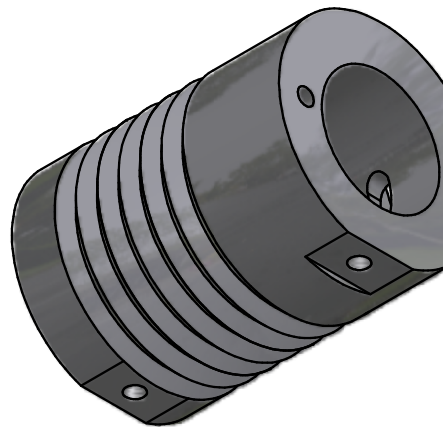
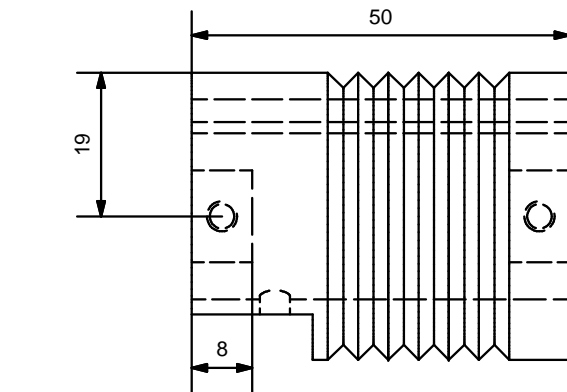
<div>J</div> <div>R</div>	Vlamhapper met inwendige schuif Flame-eater with internal valve	
	Ontw./Design J. Ridders	Units: mm Org. date: Dec-14-2005
	Get./Drawn J. Ridders	Format: A4 Update: Mar-17-2011
	Scale: no scale	Blad/Sheet: 2 van/from 6
Beschrijving / Description in: http://ridders.nu		



Speling zuiger en schuif in cilinderboring kleiner dan 0.03mm !
Clearance piston and valve in cylinder bore less than 0.03mm!

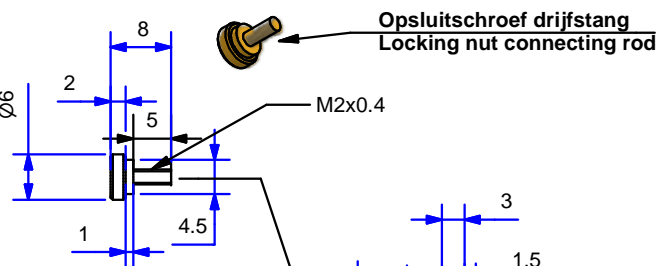
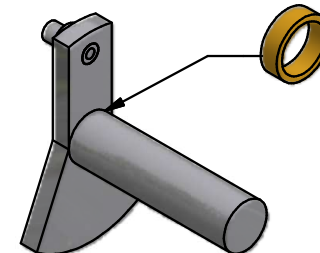
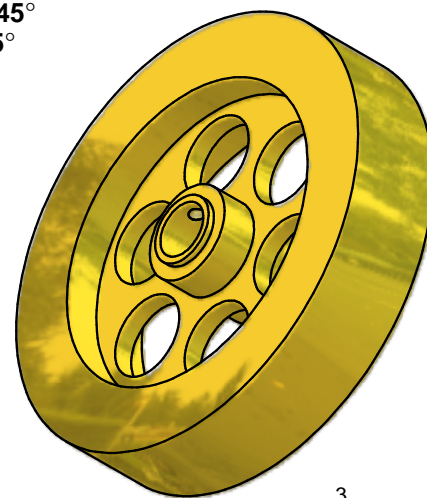


Cilinder steun / Cylinder support (2x)
(messing / brass)



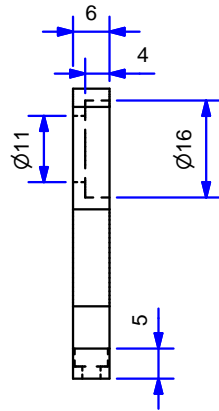
Cilinder / Cylinder
(roestvrij staal / stainless steel)

J R	Vlamhapper met inwendige schuif Flame-eater with internal valve	
	Ontw./Design J. Ridders	Units: mm
	Get./Drawn J. Ridders	Format: A4
	Scale: no scale	Blad/Sheet: 3 van/from 6
Beschrijving / Description in: http://ridders.nu		



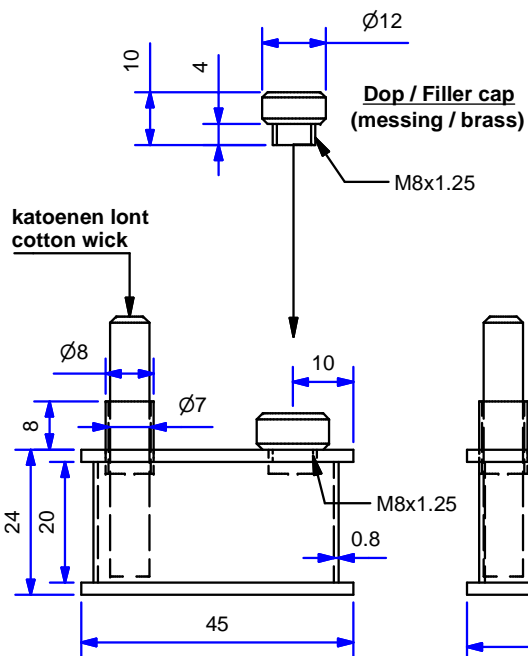
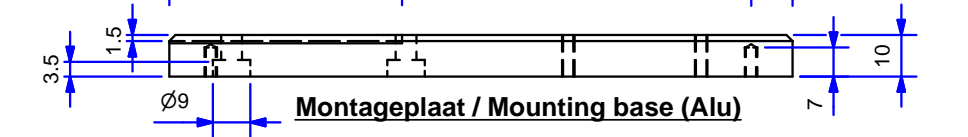
Krukas / Crankshaft (staal / steel)

<div style="font-size: 48pt; text-align: center;">J R</div>	Vlamhapper met inwendige schuif Flame-eater with internal valve	
	Ontw./Design J. Ridders	Units: mm
	Get./Drawn J. Ridders	Format: A4
		Scale: no scale
		Org. date: Dec-14-2005
		Update: Mar-17-2011
		Blad/Sheet: 5 van/from 6
Beschrijving / Description in: http://ridders.nu		

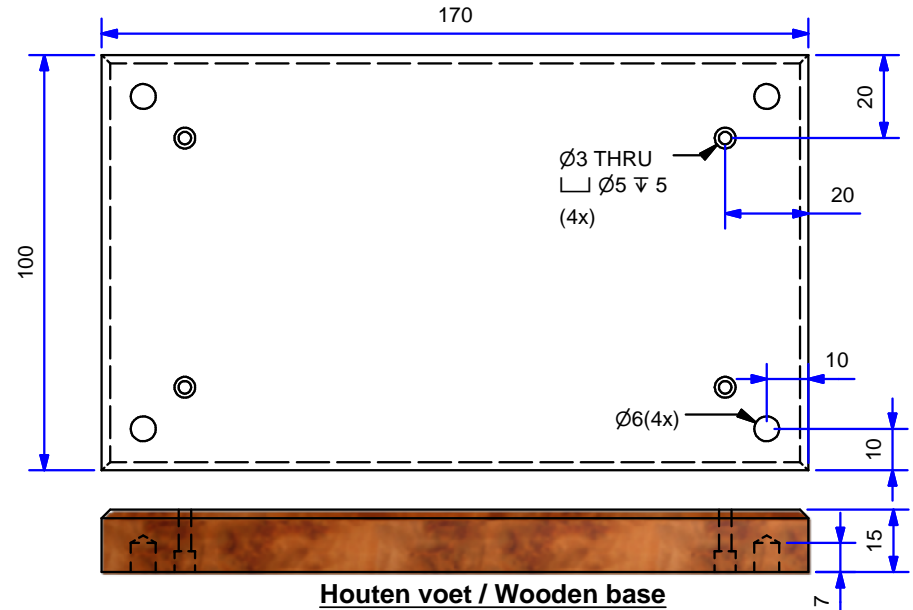
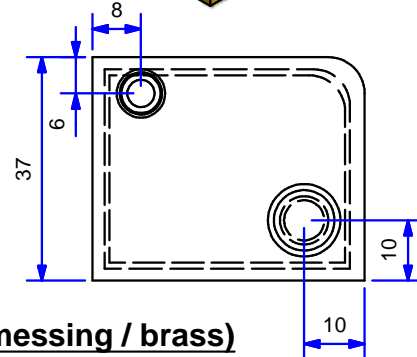


lager / ball bearing

Ø16x8 / 4



Bij voorkeur alcohol gebruiken (96 tot 96%)
Preferably use alcohol (96 to 98%)



<div style="font-size: 48pt; text-align: center;">J R</div>	Vlamhapper met inwendige schuif Flame-eater with internal valve		
	Ontw./Design J. Ridders	Units: mm	Org. date: Dec-14-2005
		Format: A4	Update: Mar-17-2011
		Scale: no scale	Blad/Sheet: 6 van/from 6
Beschrijving / Description in: http://ridders.nu			