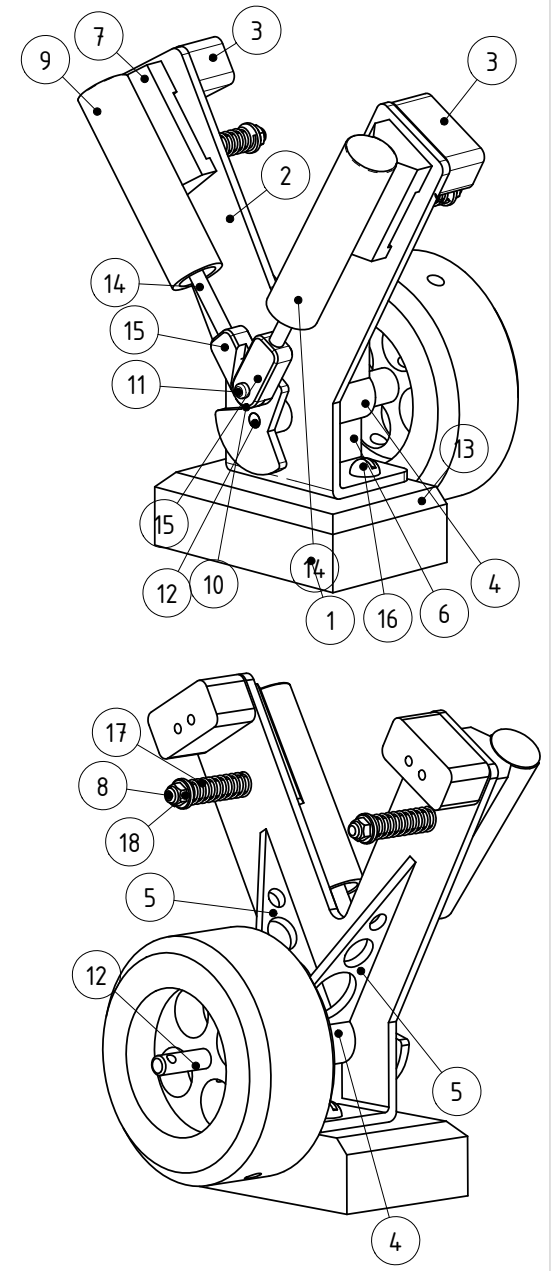


ITEM NO.	PART NUMBER	MATERIAL	QTY.
1	BASE	WOOD	1
2	BASE FRAME	BRASS	1
3	TOP BLOCK	BRASS	2
4	CRANK BEARING	BRASS	1
5	STIFFENING PLATE 1	BRASS	2
6	STIFFENING PLATE 2	BRASS	1
7	CYLINDER BLOCK	BRASS	2
8	CYLINDER BLOCK STUD	BRASS	2
9	CYLINDER	BRASS	2
10	CRANKPLATE	BRASS	1
11	CRANKPIN	SILVER STL	1
12	CRANK SHAFT	SILVER STL	1
13	FLYWHEEL	MILD STEEL	1
14	PISTON	BRASS	2
15	BIG END	BRONZE	2
16	WOOD SCREW	STEEL	2
17	SPRING	SPRING STL	2
18	NUT	MILD STEEL	2



NOTES:
 1 AS A GUIDE LINE OF HOW TO BUILD THIS STEAM ENGINE, REFER TO MODELBOUWER MAGAZINE JANUARY 1978
 2. ALL TOLERANCES +/- 0.1mm
 3. PRESS FIT ITEM 15 ONTO ITEM 14 AND HARD SOLDER

TITLE
TWIN OSCILLATING V-SHAPED STEAM ENGINE
GENERAL ARRANGEMENT & PARTS

JOW DRAUGHTING SERVICES 12 BRIGHTWELL STREET PAPAKURA NEW ZEALAND TEL/FAX 0064-09-2988815 E-MAIL: dewaal@xtra.co.nz		DRAWN BY J.A.M. DE WAAL	PROJECTION 	DRAWING NUMBER VSE-001
A ISSUED TO NVM 11/2006 REV DESCRIPTION DATE		DATE APRIL 2006	SCALE AS SHOWN	CAD FILE REV A